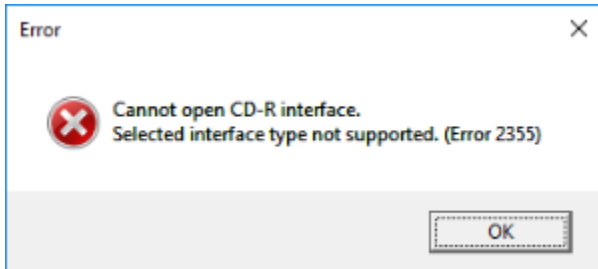


# DiscWrite Error 2355 - Cannot open CD-R Interface

When opening DiscWrite, you get an error message : Cannot open CD-R Interface. Selected interface type not supported (error 2355)  
Then when clicking OK, your optical drive is not available in the Target drop down menu.



- First make sure your Optical drive is listed in Windows Device Manager, in DVD/CD-ROM drives category.  
If your drive is not listed, make sure it is correctly connected to your computer.
- If your drive is listed, but shows a ! or ? sign, please follow the procedure [described in that page](#).
- If your drive is listed without ! or ? sign, download the latest drivers form Gear website by [clicking here](#).  
Close DiscWrite and Pyramix.  
Install the downloaded driver and restart your computer.  
Your drive should then be available in DiscWrite.