

Graphic cards recommended settings

As of [Pyramix 11](#), [Ovation 7](#) and [VCube 7](#), please see Merging recommended settings.

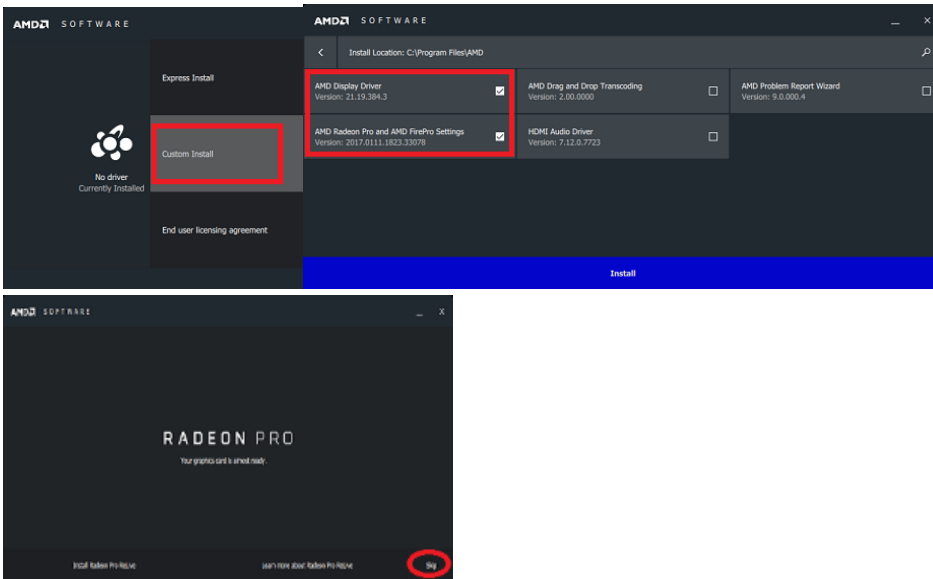
- [ATI FirePro serie](#)
- [NVidia GT730 / GT1030 / GTX750 serie](#)
- [Vertical Sync recommendation](#)

ATI FirePro serie

!!!ATI Firepro W4100 Windows 10 performance issues on MassCore platform - currently under investigation. Until this issue is resolved, only use such graphic card with Windows 7 SP1.

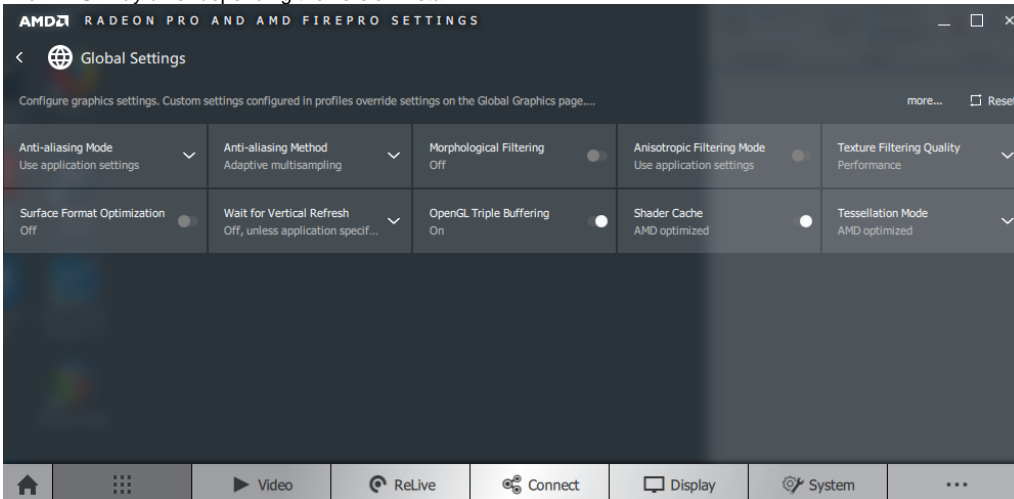
Download and install only WHQL version (Windows certified)
Choose Custom install, and only install the Display driver and AMD Settings.

Skip Radeon Pro ReLive installation.
Do not install or use any additional manufacturer utility.
Do not use HydraVision or Catalyst A.I.

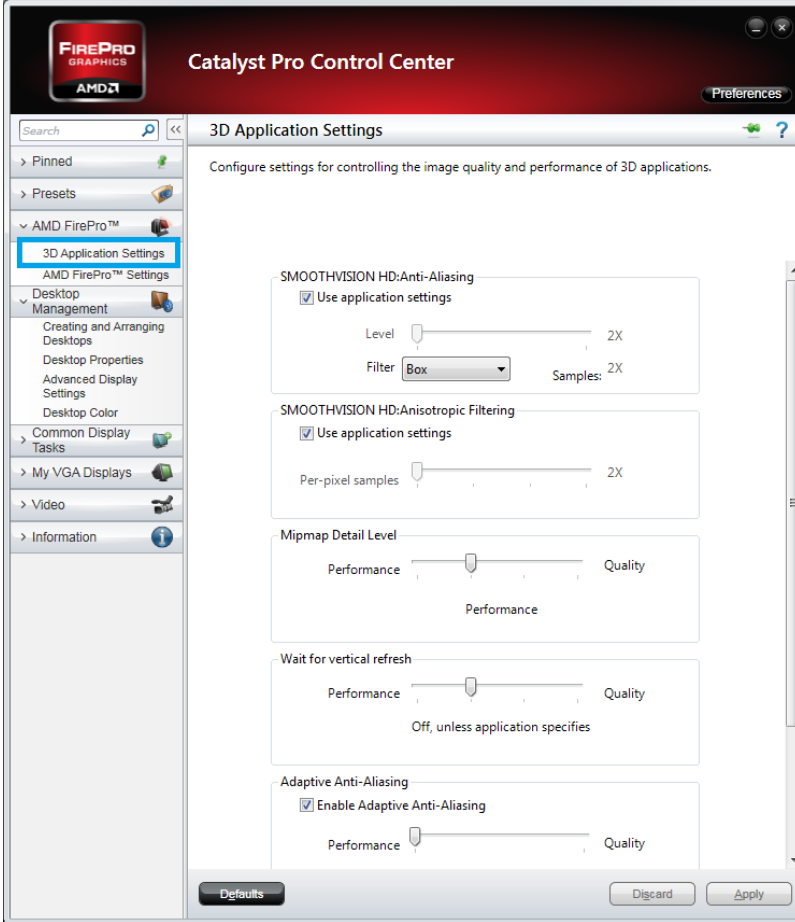


Access the ATI FirePro Settings (Click on the Applications tab, then Global Settings) and apply the following settings.

The ATI UI may differ depending the version install.



Legacy ATI devices :

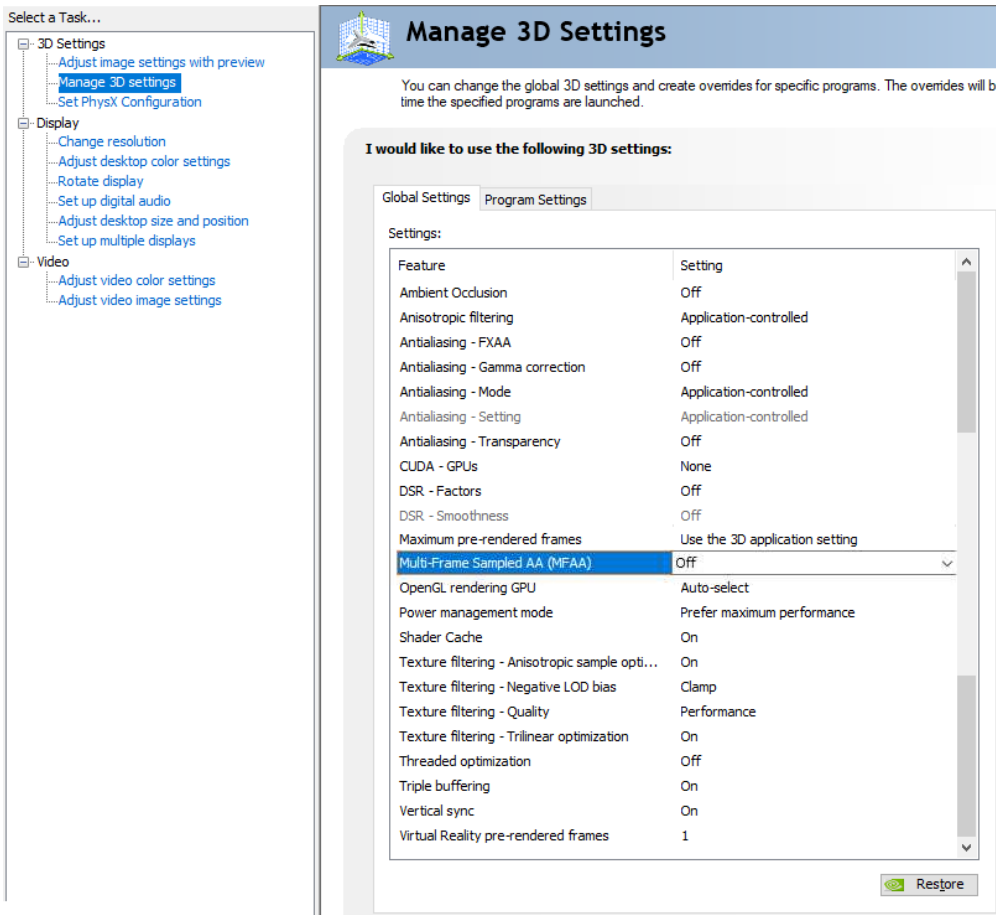


NVidia GT730 / GT1030 / GTX750 serie

Download and install only WHQL version (Windows certified)
 Choose Custom installation, and only install the Graphic driver.
 Do not install or use any additional manufacturer utility.



Go in Nvidia control panel and apply those settings :



Threaded Optimization : if set to on, may cause issue with Waves VST plugins, make sure it is set to off in that case.

Vertical Sync recommendation

Vertical Sync improves video display quality, especially on motion (see this article for details https://en.wikipedia.org/wiki/Screen_tearing)
 But it requires more resources, so if your system is already at the limit, you may consider disabling Vertical Sync (or setting it to half refresh rate - only available for Nvidia)