

Use Horus/Hapi LTC inputs and outputs in Pyramix MassCore

In Pyramix Native, you can also use the LTC in and out coming from your Horus or Hapi device.

Prerequisites

- Pyramix 9.1.x or above required
- SUB D15 Sync breakout cable (CON-D15-VTC)

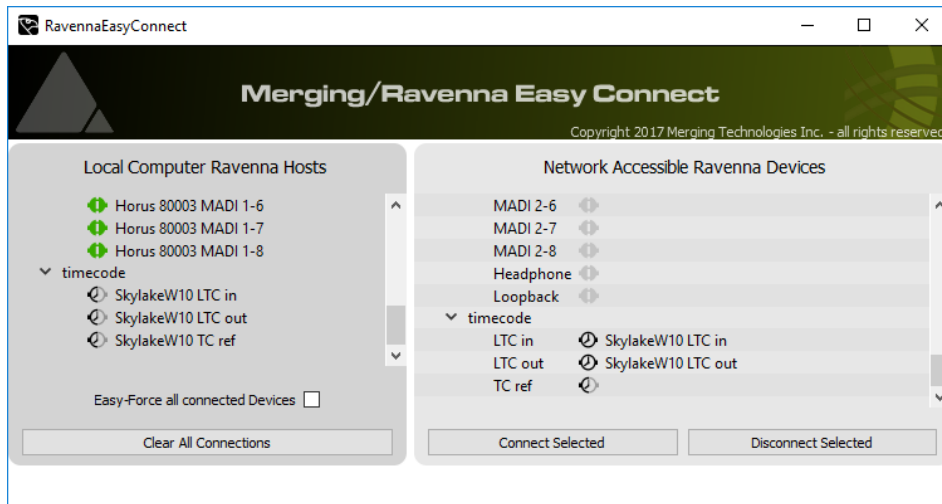
1. Plug your the Sub D15 Sync cable on your Horus/Hapi
2. Plug your LTC input and or output on this cable
3. Start Pyramix
4. Connect the Horus/Hapi LTC to MassCore :

Start Ravenna Easy Connect

Browse to the Timecode section and expand it

Select both LTC in and LTC out and click on Connect selected.

The computer name will be displayed next to LTC In and Out once connected.

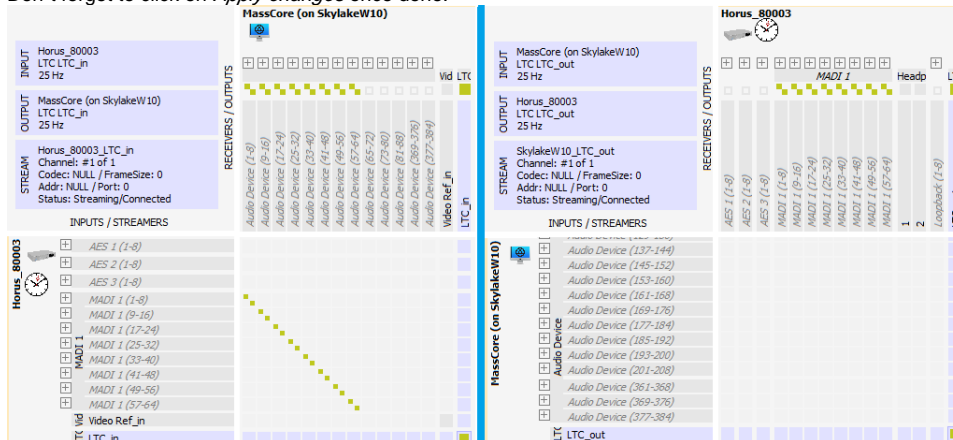


Start Aneman

Select the MassCore and the Horus / Hapi device in the world view, to populate the routing matrix.

Connect both LTC in and LTC out in the matrix (Timecodes are at the end of the inputs and outputs list).

Don-t forget to click on Apply changes once done.



5. For Pyramix to chase an incoming LTC plugged on your device, open Pyramix Transport Window and click on the MASTER selection, to set it to LTC READER.
Pyramix can now chase such TC by clicking on the Chase button of the Transport window.



It is highly recommended to use a common video ref between Horus/Hapi, MassCore and the other devices that will use the TimeCode. Otherwise, the synchronization between the devices will drift over time.