

Graphic cards recommended settings

Since Pyramix 11, Ovation 7 and VCube Z, please see Merging recommended settings.

- [ATI FirePro serie](#)
- [NVidia GT730 / GT1030 / GTX750 serie](#)
- [NVidia Quadro P620](#)
 - [Nview Desktop Manager](#)
- [Vertical Sync recommendation](#)

ATI FirePro serie

!!!ATI Firepro W4100 Windows 10 performance issues on MassCore platform - only use such graphic card with Windows 7 SP1.

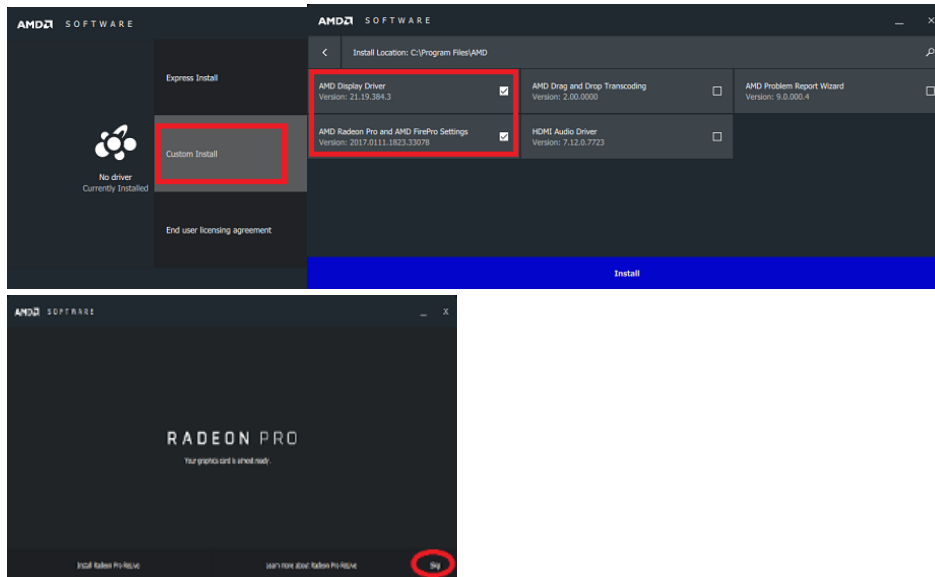
Download and install only WHQL version (Windows certified)

Choose Custom install, and only install the Display driver and AMD Settings.

Skip Radeon Pro ReLive installation.

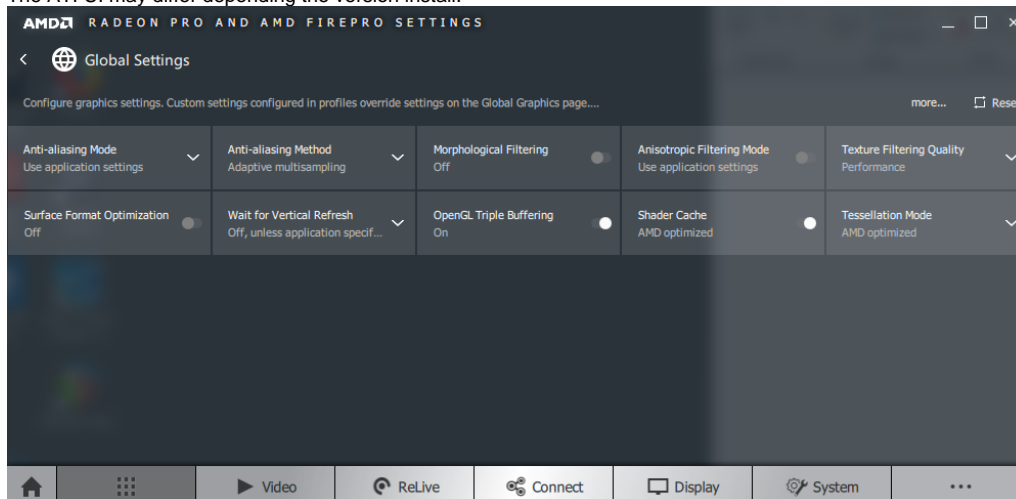
Do not install or use any additional manufacturer utility.

Do not use HydraVision or Catalyst A.I.

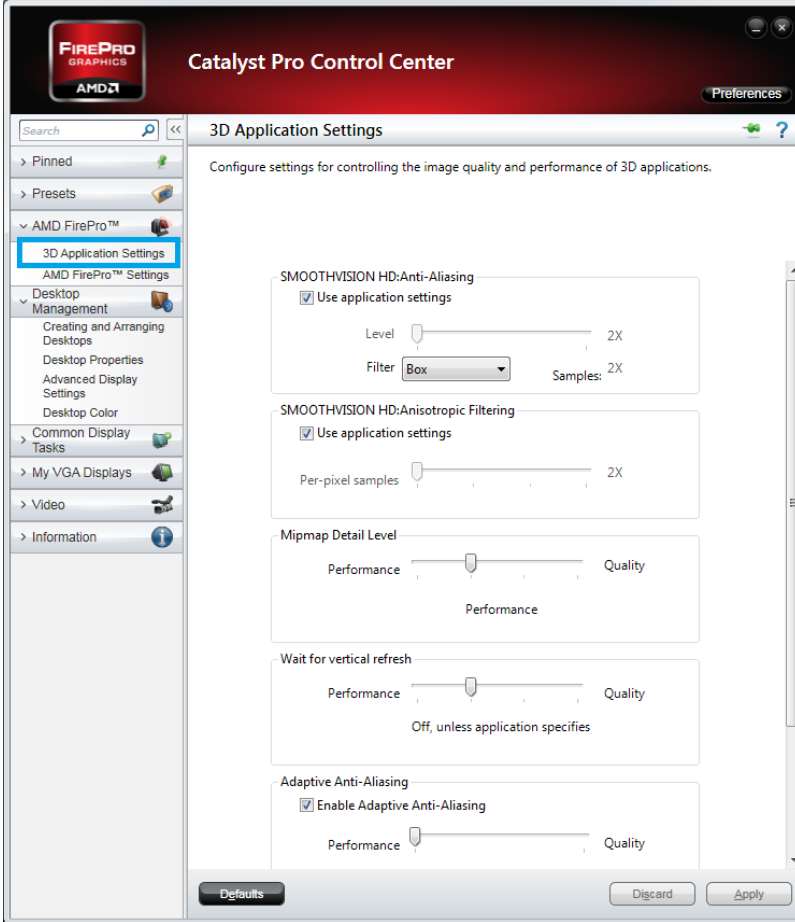


Access the ATI FirePro Settings (Click on the Applications tab, then Global Settings) and apply the following settings.

The ATI UI may differ depending the version install.



Legacy ATI devices :

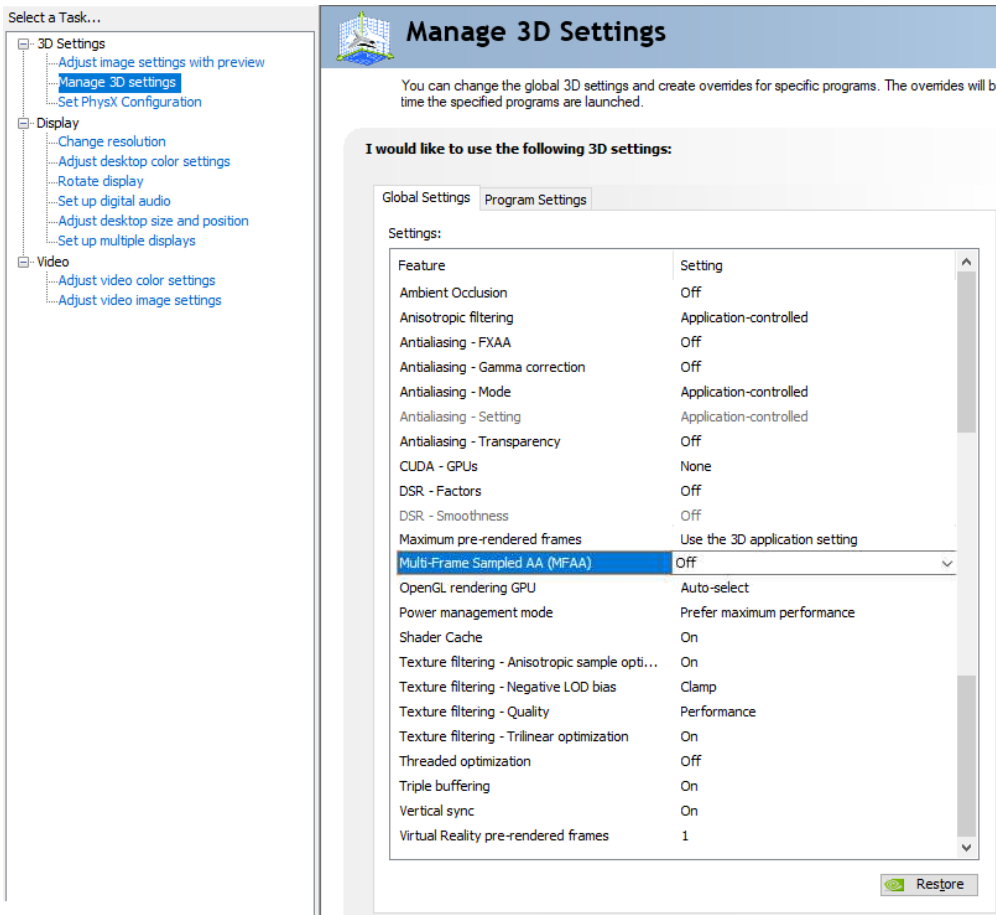


NVidia GT730 / GT1030 / GTX750 serie

Download and install only WHQL version (Windows certified)
 Choose Custom installation, and only install the Graphic driver.
 Do not install or use any additional manufacturer utility.



Go in *NVidia control panel* and apply those settings :



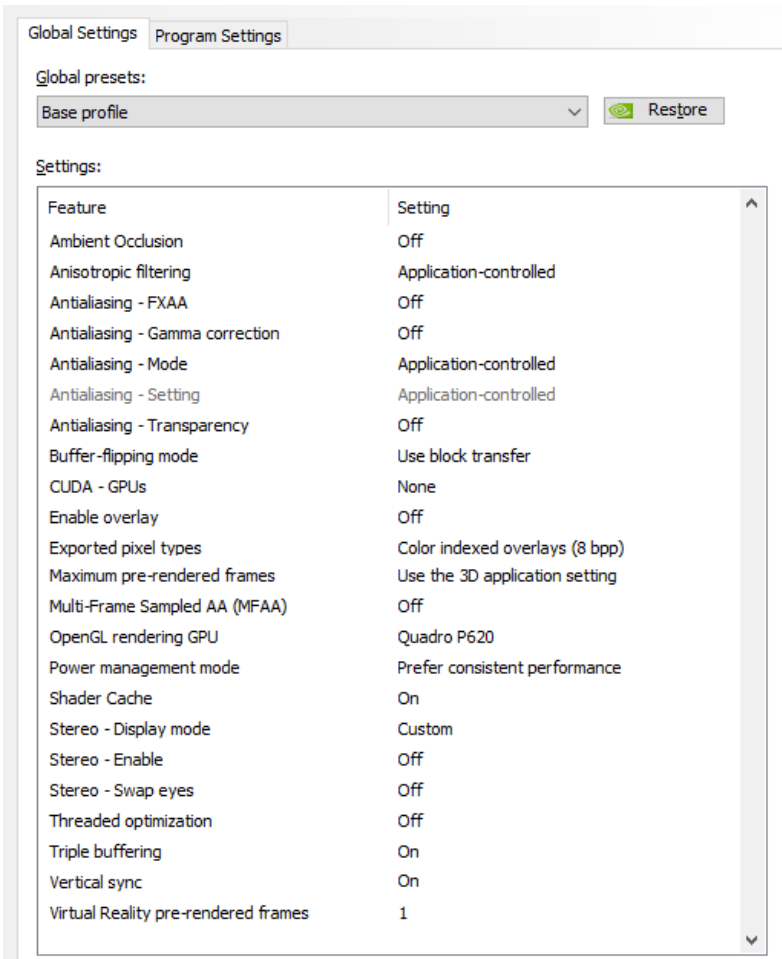
Threaded Optimization : if set to on, may cause issue with Waves VST plugins, make sure it is set to off in that case.

NVidia Quadro P620

Download and install only Optimal Driver for Enterprise (ODE) and WHQL version (Windows certified)
 Choose Custom installation, and install the Graphic driver.
 The HD Audio driver and nView desktop manager are optional.
 Do not install or use any additional manufacturer utility.
 Note : this card has been tested on Windows 10 only



Go in *Nvidia control panel - Manage 3D settings* and apply this configuration :



Threaded Optimization : if set to on, may cause issue with Waves VST plugins, make sure it is set to off in that case.
Stereo Display has not been tested

Nview Desktop Manager

The nView Desktop Manager is not mandatory but can be used along with Merging products.
 Some remarks about the features available :

- Windows spanning across multiple displays : works but creates a big resource increase for the video window (can potentially induce audio engine drop, use with caution).
- Reposition dialog boxes : this feature will bypass the Merging software windows position.

- Windows Transparency : should not be used, do not activate this feature.

Vertical Sync recommendation

Vertical Sync improves video display quality, especially on motion (see this article for details https://en.wikipedia.org/wiki/Screen_tearing)

But it requires more resources, so if your system is already at the limit, you may consider disabling Vertical Sync (or setting it to half refresh rate - only available for Nvidia)