

# IP Networks range



If you have several networks connected to your computer, the operating system uses the IP addresses to sort the network data and send it to the correct network.

If two networks are connected to one computer, the root of the IP addresses have to be different, otherwise the computer will not be able to determine where to send the network data.

Imagine a town that would have 2 streets with the same name !




This only applies if your computer is connected to two or more networks, and MERGING+NADAC has a dedicated Ethernet port.

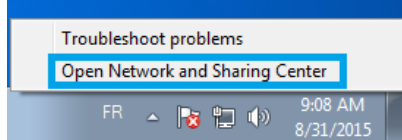
- [Getting your network IP address](#)
- [Getting the IP address of your MERGING+NADAC](#)
- [Determining if you need to change the IP address range](#)

## Getting your network IP address

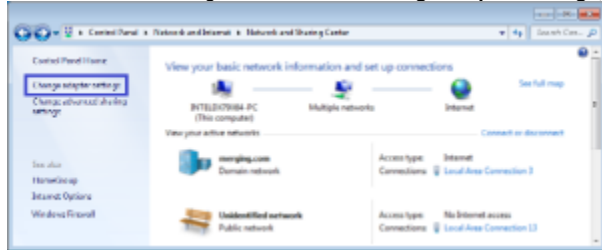
We first need to know what is the IP address range used by your data / home network.

[Unplug or shut down your MERGING+NADAC](#)

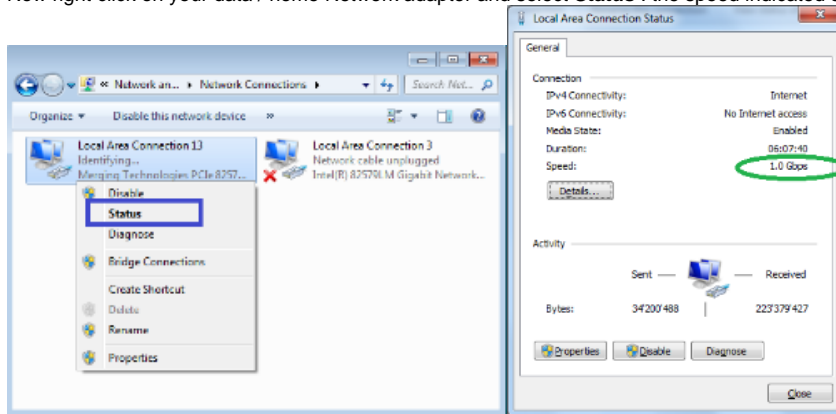
Click on the network icon in right corner of Windows Taskbar  and select **Open Network and Sharing Center**



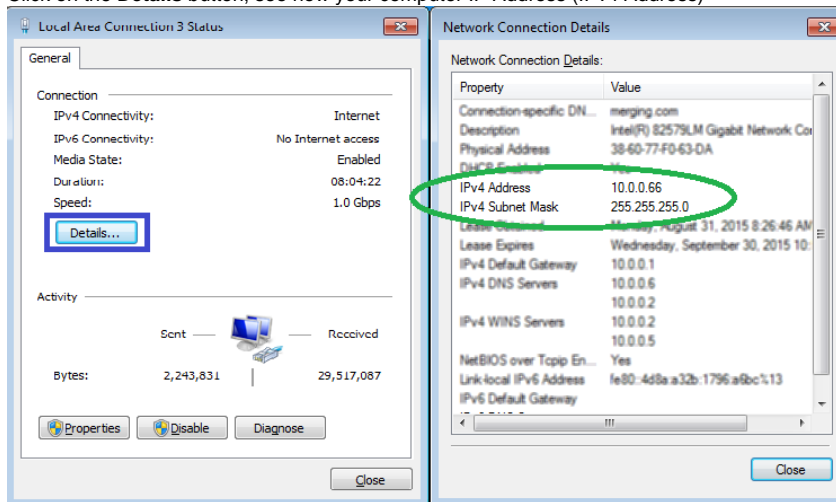
In Network and Sharing Center, click on **Change adapter settings**, on the left part of this page.




Now right click on your data / home Network adapter and select **Status** : the speed indicated should be **1.0Gbps**.

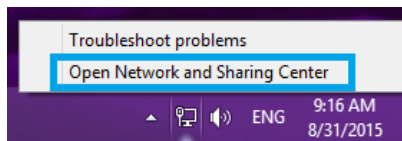


Click on the **Details** button, see now your computer IP Address (IPv4 Address)



On a Windows 8 or 8.1 computer.  
**WINDOWS 8 / 8.1 IS NO LONGER SUPPORTED SINCE ASIO V11.0.2 3156**

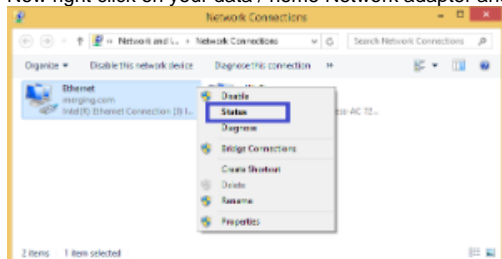
Right click on the network icon in right corner of Windows Taskbar  and select **Open Network and Sharing Center**



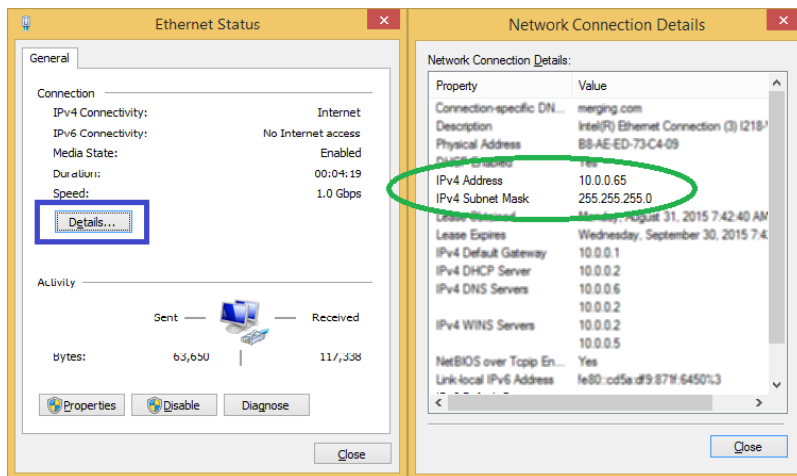
In Network and Sharing Center, click on **Change adapter settings**, on the left part of this page.




Now right click on your data / home Network adapter and select **Status**.

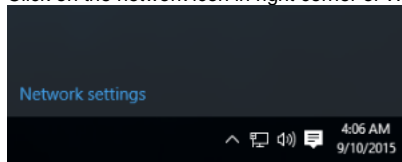


Click on the **Details** button, see now your computer IP Address (IPv4 Address)

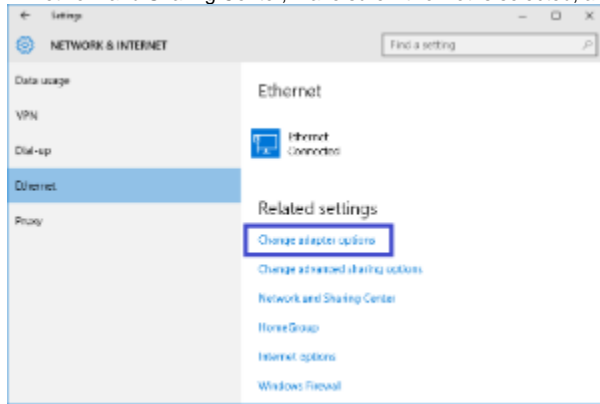


On a Windows 10 computer

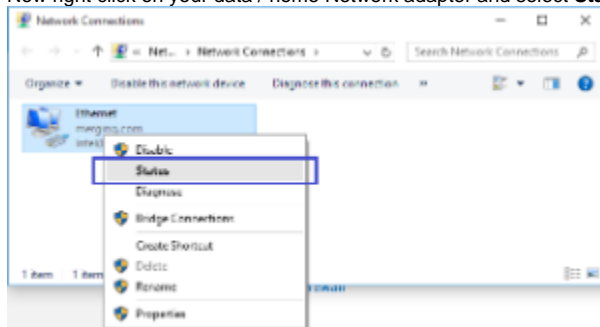
Click on the network icon in right corner of Windows Taskbar  and click on **Network settings**



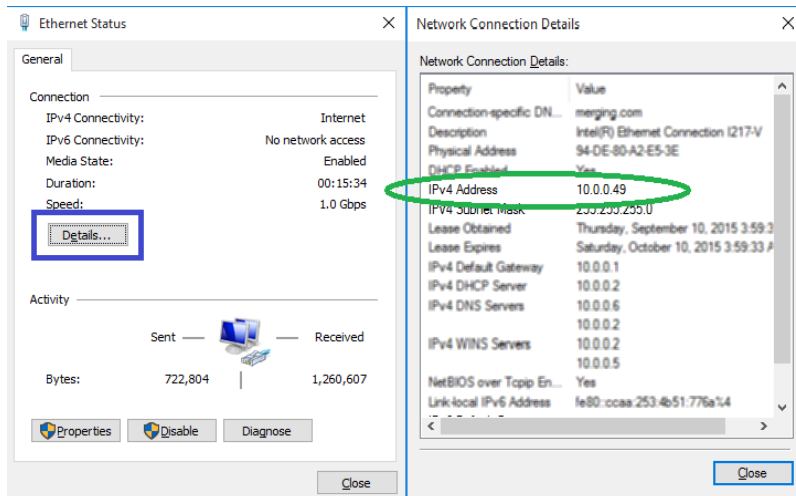
In Network and Sharing Center, make sure **Ethernet** is selected, and click on **Change adapter options**




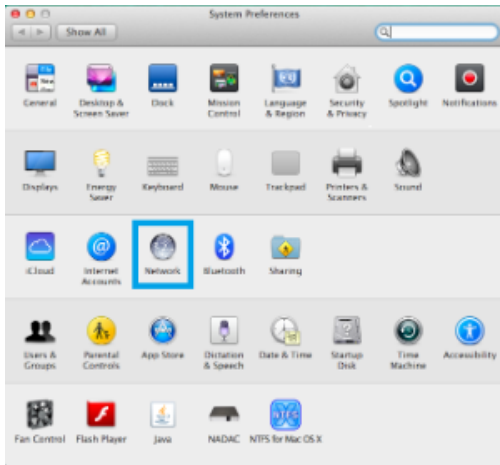
Now right click on your data / home Network adapter and select **Status**.



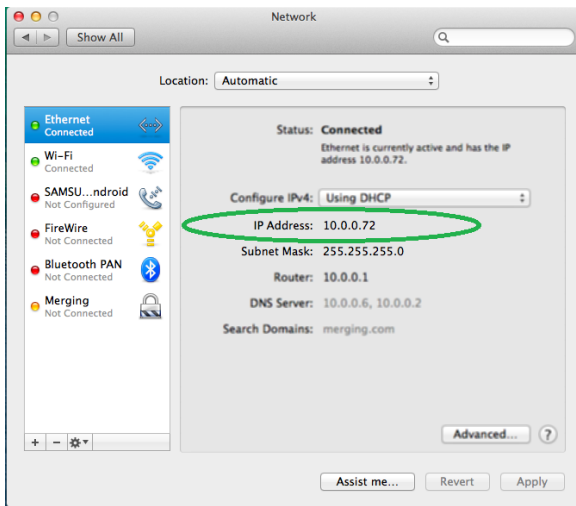
Click on the **Details** button, see now your computer IP Address (IPv4 Address)



- On a MacOS computer, Click on the Apple icon  on the top left corner and select **System Preferences**, then **Network**.

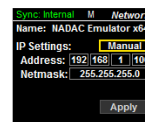
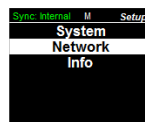
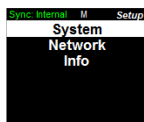
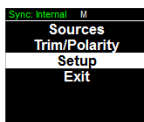


On the left pane, select your data / home Network adapter  
see now your computer IP Address



## Getting the IP address of your MERGING+NADAC

1. Plug the MERGING+NADAC network cable on your computer secondary Ethernet port
2. Start your MERGING+NADAC
3. Long press the MERGING+NADAC rotary button to access the menu.
4. Select **Setup** and short press the MERGING+NADAC rotary button.
5. Select **Network** and short press the MERGING+NADAC rotary button.
6. You can now see the MERGING+NADAC IP address



## Determining if you need to change the IP address range

Now that we get both your computer and the MERGING+NADAC addresses, we need to compare it.  
The two first numbers of your Home/Data network IP address CANNOT match the two first numbers of your MERGING+NADAC, assuming MERGING+NADAC have a dedicated Ethernet port on your computer.  
xxx.xxx.xxx.xxx

Examples:

Home/Data network IP is **192.168**.0.10 and MERGING+NADAC is **169.254**.25.20 **OK**

Home/Data network IP is **10.0**.25.20 and MERGING+NADAC is **169.254**.25.20 **OK**

Home/Data network IP is **169.254**.15.10 and MERGING+NADAC is **169.254**.25.20 **NOT OK**

Home/Data network IP is **192.168**.0.10 and MERGING+NADAC is **192.168**.10.20 **NOT OK**

The IP address 127.0.0.0 should NEVER be used.

If you need to change MERGING+NADAC IP address, [please see this page](#).

### Related articles

- [MERGING+CLOCK Power up and Shutdown sequence](#)
- [MERGING+CLOCK FAQ](#)
- [MERGING+CLOCK Indicators and Navigation](#)
- [MERGING+CLOCK.](#)
- [MERGING+CLOCK Quick Start](#)