

Windows 10 Update from Spring Creator to October 2018 Update.

When updating Windows 10 to a new major release, some settings may get reset to their default values. Here are the settings to check after updating to Windows 10 October 2018 Update (1809).



Pyramix V11.1.6 / Ovation 7.1.6/ VCube 7.1.6, or above, and MassCore RTX3.6.2 are required to run Windows 10 October Update. Previous Pyramix / MassCore versions will not work.



Usually such Windows update performs correctly, but there are still a few cases that the updates goes wrong. Unfortunately the System restore / Windows recovery is wiped out during this update, and cannot be used to restore the system. To be safe, Merging recommends you do a backup of your system.



Multiple Boot users

This update will rename and potentially change the Windows Boot menu entries. You can perform a backup of your boot menu: Download and install Visual BCD Editor. Launch Visual BCD, and browse to Store > Backup store. Then save the file in a safe place. Once Windows has been updated, launch Visual BCD and browse to Store > Import Store. Import the previously saved file. Proceed with caution, Windows may not start anymore in case of wrong manipulation. Merging will not be hold responsible in case of issues using Visual BCD Editor.

- [UNINSTALL MASSCORE](#)
- [UPDATE WINDOWS TO OCTOBER 2018 UPDATE](#)
- [WINDOWS CONTROL PANEL](#)
 - [Power Options](#)
 - [System > Advanced System Settings](#)
 - [Device Manager](#)
- [WINDOWS SETTINGS](#)
 - [System](#)
 - [Gaming](#)
 - [Privacy](#)
 - [OneDrive configuration / uninstall](#)
 - [WinSAT](#)
- [RAVENNA ASIO](#)
- [OVATION KEYBOARD USERS](#)

UNINSTALL MASSCORE

Before the update, first uninstall MassCore:

Go in MT Security Settings > MassCore tab.

Click on Uninstall MassCore, and press OK. Your computer will reboot.

As you will install a MassCore Engine version using the same authorization code, you will not need to re-authorize the MassCore RTX License.

You are now ready to update to Spring Creator 1803.

UPDATE WINDOWS TO OCTOBER 2018 UPDATE

To update to October 2018 Update (1809), install the update with Windows updates.

Your computer will have to restart several times, this can take a while.

Note : if you would rather use the regular Windows Updates mechanism, the Defer updates policy will apply, and you may not be able to obtain the latest Windows version.

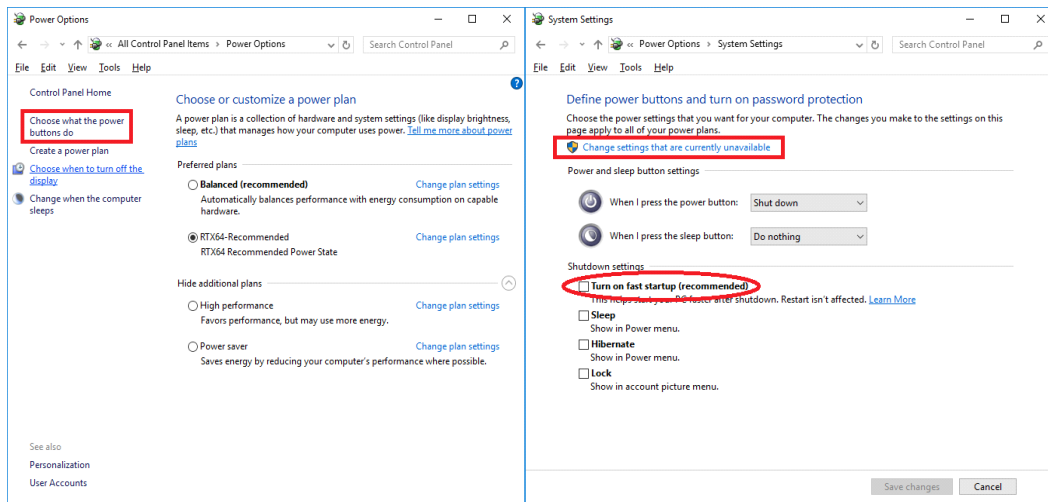
WINDOWS CONTROL PANEL

To access Windows 10 1809 Control Panel, type "control panel" in Windows Search box.

You can right click on the control panel icon from the search result and pin it to the Start menu or Taskbar.

Power Options

The "Fast Boot feature" must be disabled again, which indeed puts the computer to sleep when you select shut down. Click on "Choose what the power buttons do" on the left hand side of Power options page. Then click on "Change Settings that are currently unavailable" and uncheck the "Turn on fast startup" option. Click on Save Changes. Note also that hibernate / sleep is not supported by MassCore engine. This is also not supported by the Ovation / Pyramix ADR keyboard.



Native users : Users can switch to the Ultimate Performance power plan. This power plan is not available on systems powered by batteries (such as laptops) and only available on Windows 10 Pro. In the main Power options page, expand the option which says "Unhide Additional plans." to see it. If you don't see it, in Windows Search field, type *CMD*, and right click to open a Command Prompt as administrator. In the command prompt, copy the following command, and hit Enter.
powercfg -duplicatescheme e9a42b02-d5df-448d-aa00-03f14749eb61
 The "Ultimate Performance" plan should now be available.

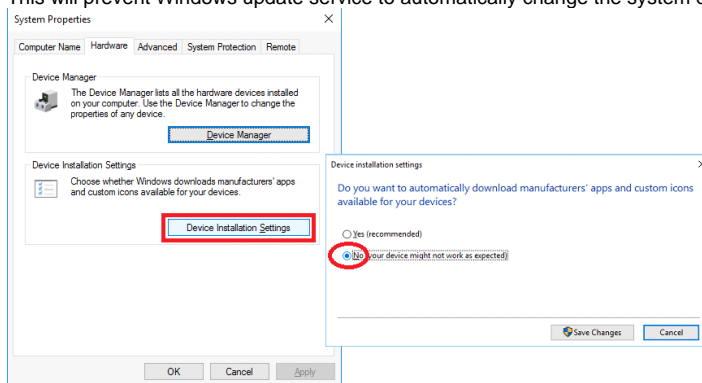
System > Advanced System Settings

System Protection tab

In the *Control Panel > System* window > *Advanced System Settings*, switch to *System Protection* tab: Make sure protection is turned on for your system drive. Select the system drive and click on *Configure*. Select *Turn on system protection*, and set a value for *Disk Space Usage* (usually 10% max). Disable the system protection on the *Media drive(s)*, as this feature only works on system files and programs.

Hardware tab

Back in the main *System* windows, switch to *Hardware* tab: Click on *Device Installation Settings* and select the "No, let me choose what to do" option. This will prevent Windows update service to automatically change the system drivers.



Device Manager

Ports (COM & LPT)

If you use 9pin-RS422 connection:
Communication Port (COM x) > *Properties*
Ports Settings tab > *Advanced* > set both *Receive* and *Transmit buffer* to **Low (4)**

Universal Serial Bus controllers

Check each USB Root Hub / Host Controller and disable power management if any, by right clicking on it and accessing its properties.(Power Management tab)

WINDOWS SETTINGS

Settings page can be accessed through Windows Start > Settings icon (and  + i)

System

Clipboard : you can activate the Clipboard history feature (to save multiple items in Windows clipboard).
Note : This feature is only applicable to few Windows applications for the moment.

Gaming


In Game Bar, set "*Record game clips, screenshots...*" to off, and disable "*Open Game bar ...*" and "*Show Game bar when I play ...*"
In Game DVR, set both "*Background recording*" and "*Recorded Audio*" to off.
In Game Mode, set "*Use Game Mode*" to off.

Privacy

In *File System*, "*Allow Apps to access your file system*" has to be turned on (default).

OneDrive configuration / uninstall

OneDrive has to be reconfigured if it was not previously configured:
If you use OneDrive, you should configure it to not interfere in the network traffic.

Right click on the *OneDrive* icon  in the notification area and select *Settings*.
Remove "*Start OneDrive Automatically when I sign to Windows*" and "*Display notifications when people share with me or edit my shared files*".

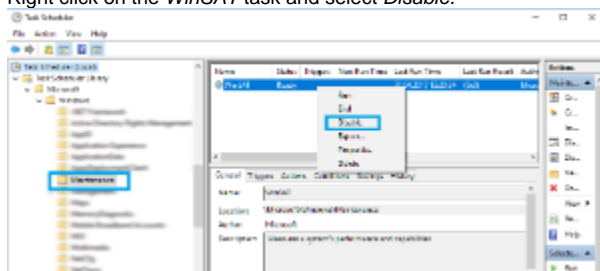
In the *Network* tab, set both *Upload* and *Download rates* to *Limit to* : 125 KB/s (or lower).
If you don't use OneDrive, you may uninstall it in *Windows Settings > System > Apps and features*.

WinSAT

WinSAT Task should be disabled.

In Windows 10, Windows System Assessment Tool (WinSAT) is scheduled to run too often compared to previous Windows version, and this tool is not very useful. Its main purpose is to calculate the system rating displayed in Windows Control panel > System page, but it can also re-activate some setting without noticing the user.
Therefore Merging recommends you disable it.

Go in *Windows Control Panel > Administrative Tools > Task Scheduler*.
Browse the Task scheduler library to *Microsoft > Windows > Maintenance*.
Right click on the *WinSAT* task and select *Disable*.



Browse now to *Microsoft > Windows > Windows Defender*.
Right click on the *Windows Defender Scheduled tasks* and select *Properties*.
in the *Conditions* tab, set it to *Start only if the computer is idle*, and *Stop if the computer ceases to be idle*

RAVENNA ASIO

The update enables Windows Network Throttling, that can cause issues on the network bandwidth.
Please open Merging RAVENNA ASIO control panel, the setting will be automatically modified, and the application will give you a confirmation message.
Reboot the computer after the change has been made.

OVATION KEYBOARD USERS

Windows 10 October 2018 Update (1809) requires ChangeMe version 5.25.8. Previous versions will not work on Win10 1809. [Follow the installation instruction on this page](#) to update.