

Cisco SG350-10 Auto-configuration.



i General Info.

This is in no case an exhaustive configuration procedure, It's a simple guide on how to configure these switches to use them with Ravenna /AES67 networks.
This guide applies to both SG350-10 and SG350-10P

Before Starting


Important! If you have problems accessing the switch for configuration when connected to the Merging MassCore PCIe Ethernet card (NET-MSC-GBEX1) please connect it to the PC's on-board Ethernet port. When configuration is completed reconnect the switch to the MassCore Ethernet card.

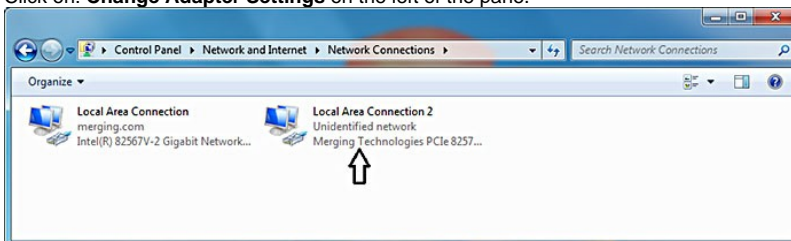
! Connecting several Cisco switches together requires additional configuration.
Please also see the [Multiple network switches considerations page](#) and [Cisco SG300/350 Multiple switches configuration guide](#).

! Dante devices requires an additional configuration, not included in the configuration files.
See the [Dante devices Multicast Group configuration page](#) for details

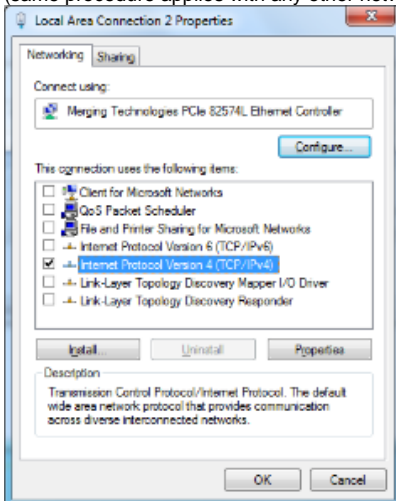
Cisco SG350 Switch Auto-configuration Procedure

Note: For Cisco SG350 Switches other than the **SG350-10** please use the [manual configuration procedure](#).

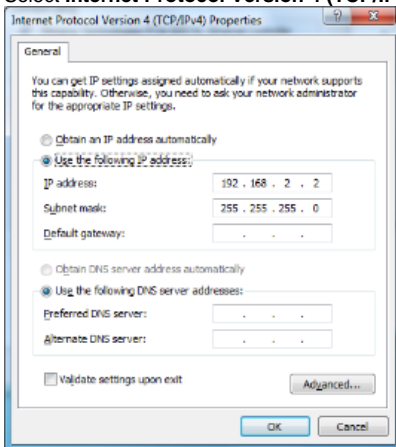
1. Right click on the Network icon in the Windows Taskbar. 
2. Select: **Open Network and Sharing Center**
3. Click on: **Change Adapter Settings** on the left of the pane.



4. Right-click the **Merging Technologies PCIe 8257 RAVENNA** Network Card and select **Properties:** (same procedure applies with any other network adapter)



5. Select **Internet Protocol Version 4 (TCP/IP)** and Click on **Properties:**



6. Click on the **Use the following IP address:** radio button and enter **192.168.1.2** (the Cisco SG350 switch has a factory default IP address of **192.168.1.254**).

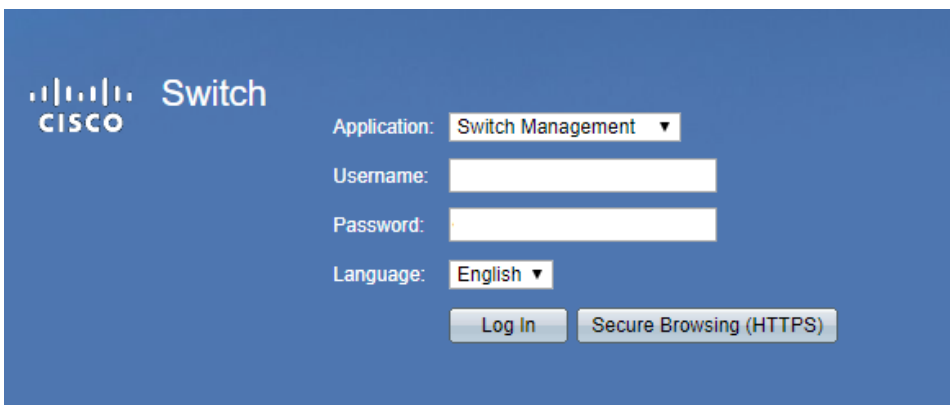
Click on the **OK** button to accept the settings and close the dialog.

- a. **Note:** if the switch cannot be accessed at the address 192.168.1.254, it could be that a DHCP is present, in which case, open MTDiscovery and check if the switch appears with the name "SwitchABCDEF" with the last digits being its MAC address.

7. Open a browser and type **192.168.1.254** in the address bar.

Default user name: "**cisco**" - password: "**cisco**".

Click on the **Log in** button .



8. After the login prompt, you will be asked to change that default password to whatever you want. It is a required step and the first one into securing your router/switch, it is also a one time step only.

After the default is changed, if you wish to change it again you will have to do that in the Administration page. Resetting the switch to "factory defaults" will also ask you to do this step again.

Change Password

Please change your password from the default settings for better protection of your network

The minimum requirements are as follows:

- Cannot be the same as the user name.
- Cannot be the same as the current password.
- Minimum length is 8.
- Minimum number of character classes is 3. Character classes are upper case, lower case, numeric, and special characters.

New Password Configuration

Old Password:

New Password:

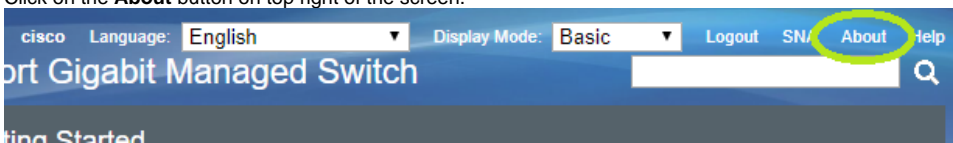
Confirm Password:

Password Strength Meter: Below Minimum

Password Strength Enforcement: Disable

Apply

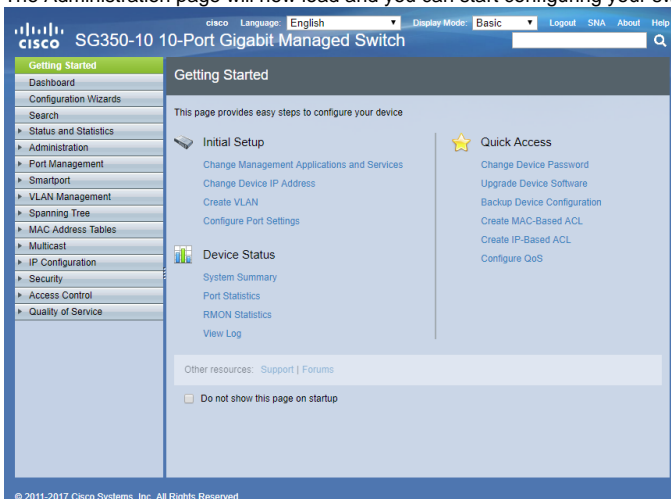
9. Make sure the switch is running firmware **2.3.5.63** or above. Click on the **About** button on top right of the screen.



If you have to update the firmware, refer to *Cisco 350, 350X, and 550X Series Managed Switches Administration Guide - Firmware Operations* section.

[Click here to access Cisco documentation website](#)

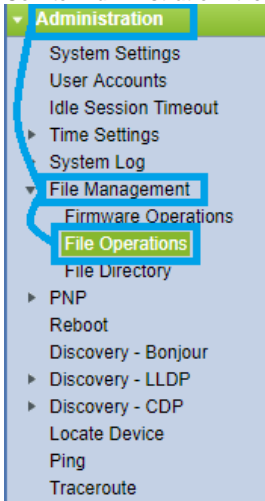
10. The Administration page will now load and you can start configuring your switch.



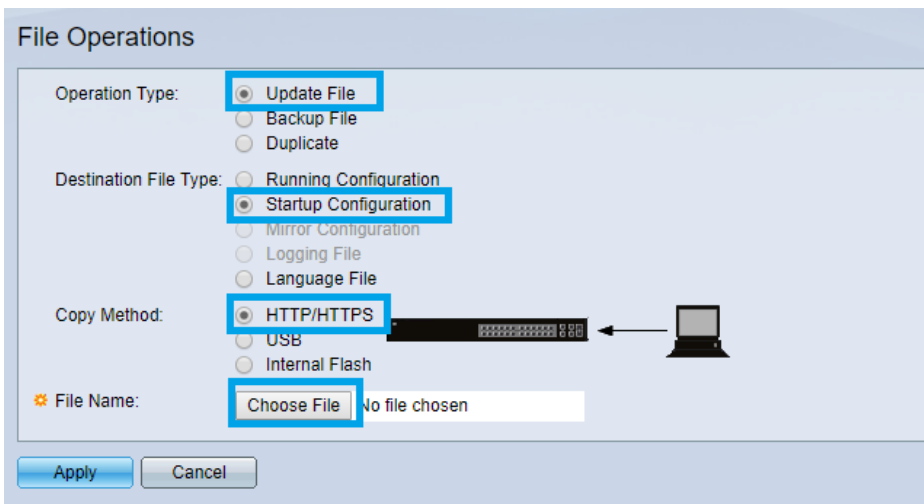
11. Download the latest configuration file for your Cisco SG350 switch model :
[Cisco SG350-10](#)
[Cisco SG350-10 - Dual VLAN \(Port 1 to 5 : Regular network. Port 6 to 10 : RAVENNA/AES67\)](#)

The Merging RAVENNA configuration file will auto-configure various settings /protocols to optimize the RAVENNA / AES67 network, and also sets the definitive fixed IP address of the switch: **169.254.1.254**)

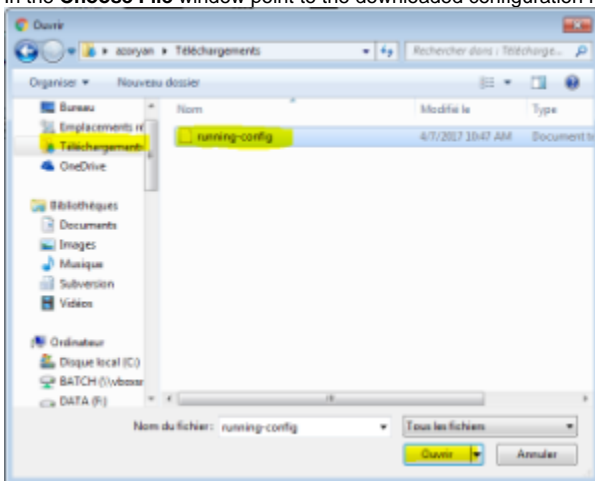
12. Go into "Administration" then click "File Management" to expand, then click "File Operations" to open its pane.



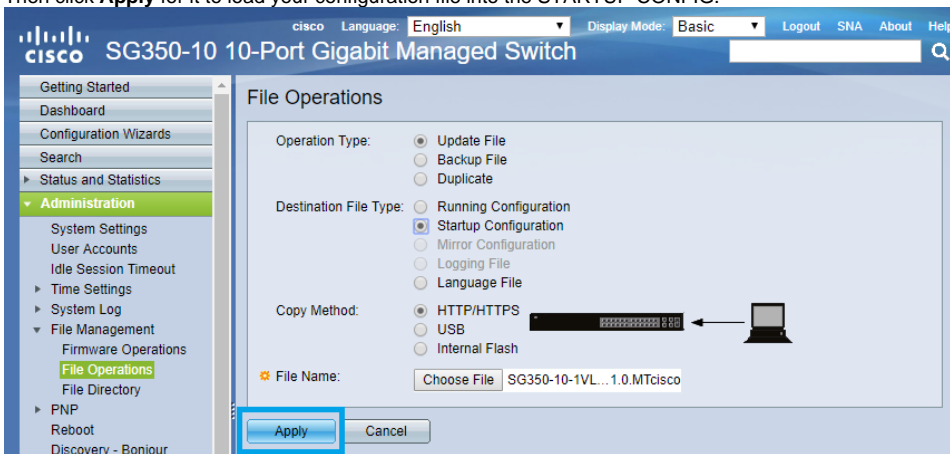
13. Now select
Operation Type : **Update File**
Destination File Type : **Startup Configuration**
Copy Method : **HTTP/HTTPS**



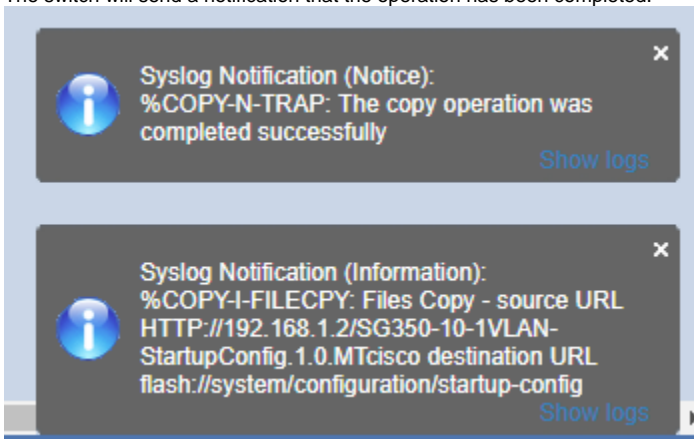
14. Then click **Choose File** and a new window will pop up.
In the **Choose File** window point to the downloaded configuration file location, select it and click **Open**.



15. Then click **Apply** for it to load your configuration file into the STARTUP CONFIG.



16. The switch will send a notification that the operation has been completed.

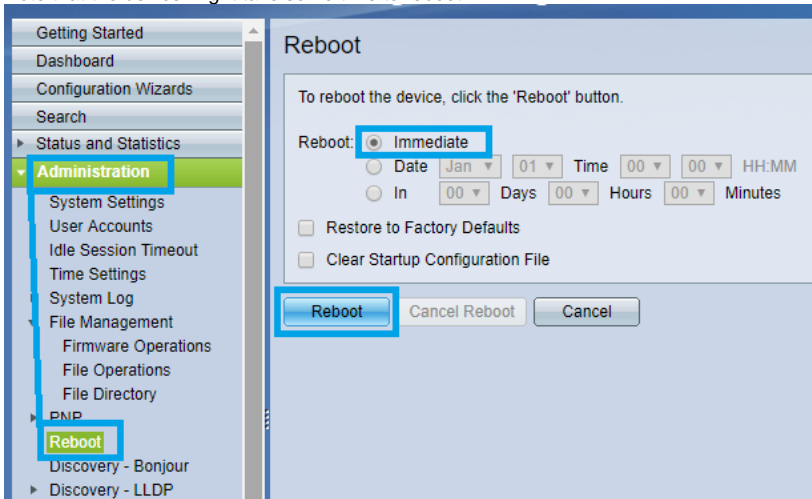


17. You must now restart the switch for the changes to apply.

Click **Administration > Reboot**

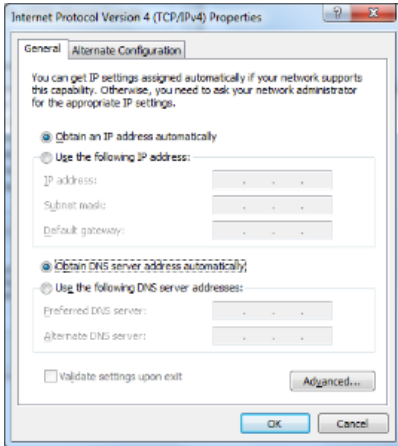
Select **Immediate** and click on **Reboot** button.

Note that the device might take some time to reboot.



18. In the Network Connections window (see steps 3. 4. and 5. above), right-click the Merging Technologies PCIe 8257 RAVENNA Network Card and select Properties.

Select the Obtain an IP address automatically radio button and also select Obtain DNS server address automatically, click on OK.



19. The switch is now configured and ready to use, and the Merging RAVENNA Network Card should have auto-configured itself with an IP in the 169.254.x.x range.

You can verify this by opening a browser and typing 169.254.1.254 in the address bar, and log in.