

# Wrong RTX Key code in your MT Security MassCore Tab

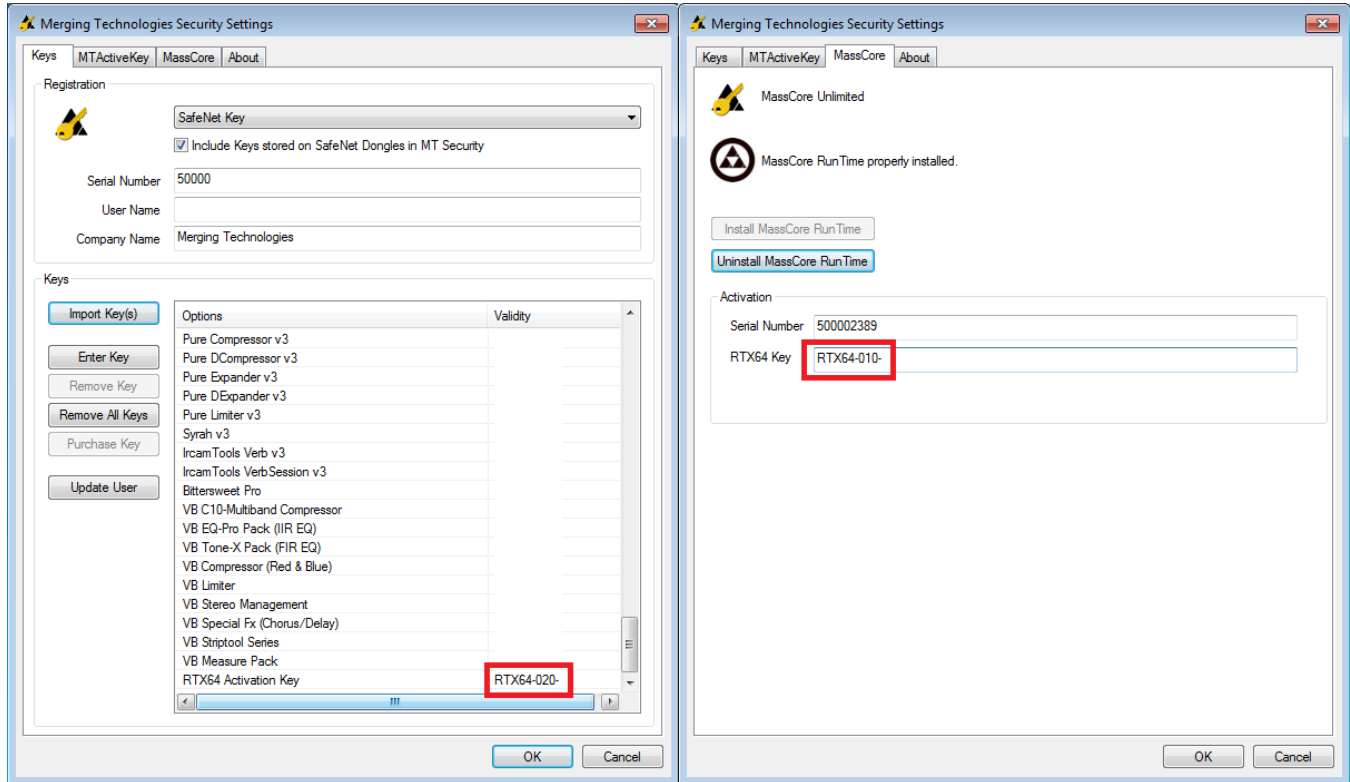
## Pyramix MassCore version vs. RTX keys versions:

Pyramix v9 - 64bit uses keys starting with RTX64-010- XXXX-XXXX-XXXX-XXXX

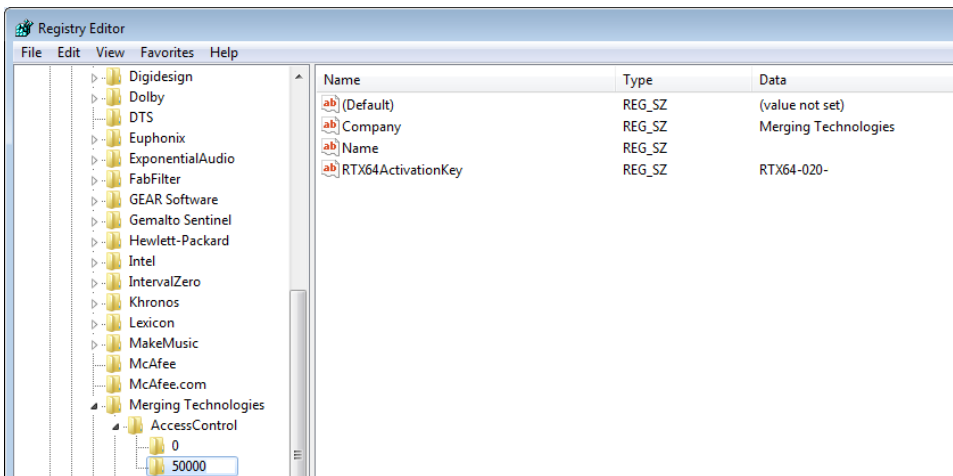
Pyramix v10 - 64bit uses keys starting with RTX64-020- XXXX-XXXX-XXXX-XXXX

Pyramix v11 - 12 - 25th- 64bit uses keys starting with IZRTX64-030- XXXX-XXXX-XXXX-XXXX

In my MT Security Settings, Keys tab, the RTX key ( last line) is different than the one you have in the MassCore tab,



1. Close Pyramix and the MTSecurity panel,
2. Go to the Windows registry (regedit.exe) under HKEY\_LOCAL\_MACHINE/SOFTWARE/Merging Technologies/AccessControl



3. There should be a subfolder with your key serial number 50000xxxx
4. Within the subfolder you have different values and the RTX64ActivationKey. Delete this RTX64ActivationKey.
5. Now launch MT Security Settings and re-import your key file.