

MassCore Runtime is not properly configured error message

When starting Pyramix in MassCore, if you get "MassCore Runtime is not properly configured. Configuration updated. Please Reboot the computer" error message.

Pyramix checks the MassCore configuration when starting, and if parameters are not correct, it will try to automatically change the wrong parameters. For Pyramix to change such parameters, you must have the Administrator rights on your computer.

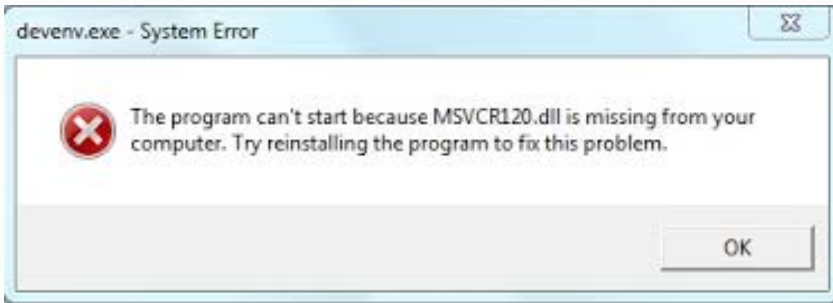
If after a reboot you still have this error message :

1. Download [RTX Properties check](#)
2. In Windows Start menu, type **CMD** to locate the command line prompt. Right click on it and select **Run as Administrator**
3. In the command line, enter the file path of RTXpropertiesCheck.exe to run it.

For example :

C:\Users\yourusername\Downloads\RTXPropertiesCheck.exe If you have downloaded it in the default download folder. Or Drag&Drop the **RTXPropertiesCheck.exe** file in the command window.

4. If you can't run the RTXpropertiesCheck.exe, and receive the error message :



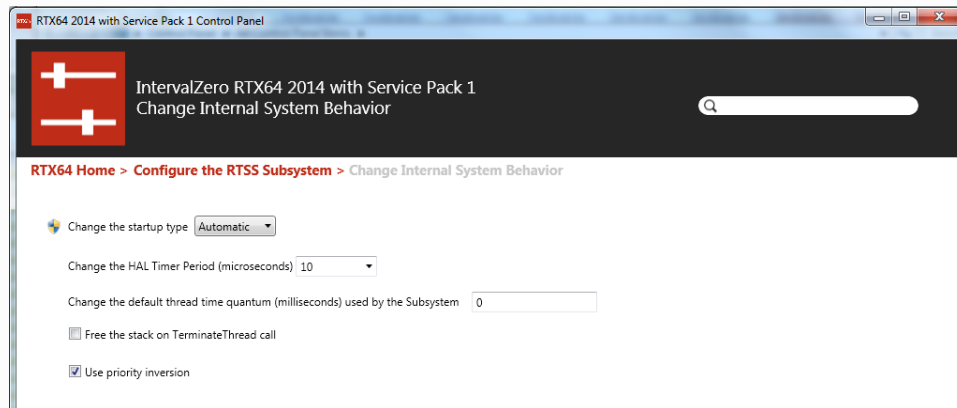
Run the vcredist_x642013 file included in the archive.
And try again

5. If the result is [RTX64 properties valid](#), Pyramix should now be able to start in MassCore mode.
6. If the result is [RTX64 properties non valid](#) :

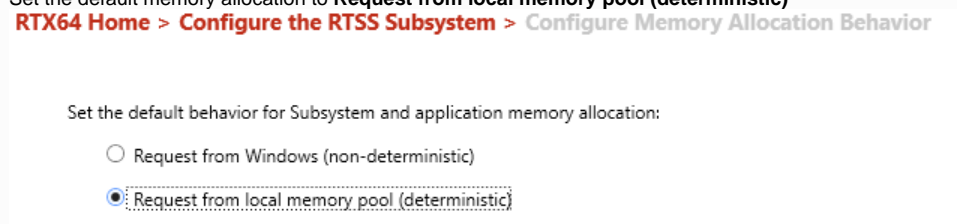
```
Administrator: Command Prompt
Microsoft Windows [Version 10.0.16299.248]
(c) 2017 Microsoft Corporation. All rights reserved.

C:\>RTXPropertiesCheck.exe
bBootStartOK = 1
dwPeriod = 10 should be 10 ; see SYSTEM\CurrentControlSet\Control\RTX64\HalTimerPeriod
dwLocalMemory = 0 should be 1 ; see SYSTEM\CurrentControlSet\Control\RTX64\EnableLocalMemory
dwEnterDebuggerOnException = 2 should be 2 ; see SYSTEM\CurrentControlSet\Control\RTX64\EnterDebuggerOnException
*****
RTX64 properties non valid
C:\>
```

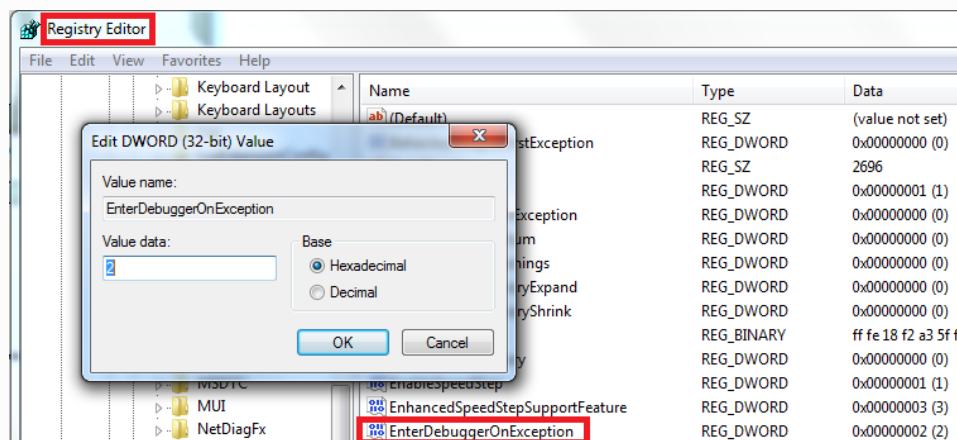
- If **dwPeriod = 100** should be **10** :
 - Go to Control Panel/RTX64/Configure the RTSS Subsystem/Change internal system behavior/
 - And edit the HAL Timer Period (millisecond) : **10**



- If **dwLocalMemory = 0** should be **1** :
 - Go to Control Panel/RTX64/Configure the RTSS Subsystem/Change memory allocation behavior
 - Set the default memory allocation to **Request from local memory pool (deterministic)**



- If **dwEnterDebuggerOnException = 0** should be **2** :
 - Go to the Registry Editor (Regedit.exe),
 - In the **RTX64** folder (Computer/HKEY_LOCAL_MACHINE\SYSTEM\CurrentControlSet\Control\RTX64)
 - And edit the EnterDebuggerOnException : **2**



- You must restart the computer for the changes to apply.

If the problem persists, please take a screenshot of the RTXpropertiesCheck.exe command prompt and contact support@merging.com

Related articles

- [MAD - MassCore Mode.](#)
- [RTX Server error:"RTXTCPIP-E1000: warning: EPROM/FLASH checksum validation failed."](#)
- [Graphic cards recommendations](#)

- Wrong RTX Key code in your MT Security MassCore Tab
- MassCore 25th Anniversary incompatibilities.